



[www.jirous.com](http://www.jirous.com)

## Parabolic antenna JRMA - 650 -10/11Ra

---

Antenna JRMA – 650 – 10/11Ra is designed for microwave links at the frequency bands 10 and 11 GHz. Precise performance is complying with standard ETSI EN 302-217-4-2 class 2. Whole antenna system with bracket JDMW-900 has extreme wind stability.

### Electrical parameters:

<b>Frequency range</b>	10.1 – 11.7 GHz
<b>Gain – Low band</b>	34.1 ± 0.5 dBi
<b>Gain – High band</b>	35.5 ± 0.5 dBi
<b>Front to back ratio</b>	≥ 56 dB
<b>Beamwidth<sub>-3 dB</sub></b>	3.4° (low band) 2.9° (high band)
<b>Return loss (VSWR)</b>	≥ 18 dB ( ≤ 1,3)
<b>Polarization</b>	Vertical / Horizontal
<b>ETSI standard</b>	EN 302-217-4-2 v1.5.1 Class 2

### Mechanical parameters:

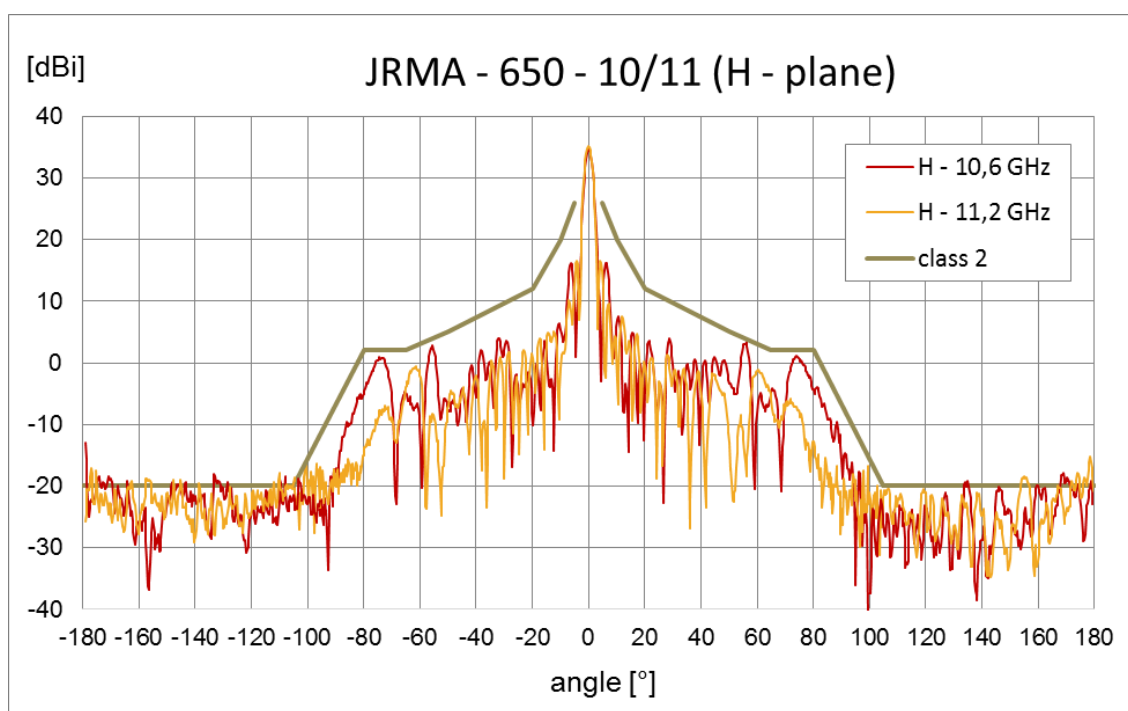
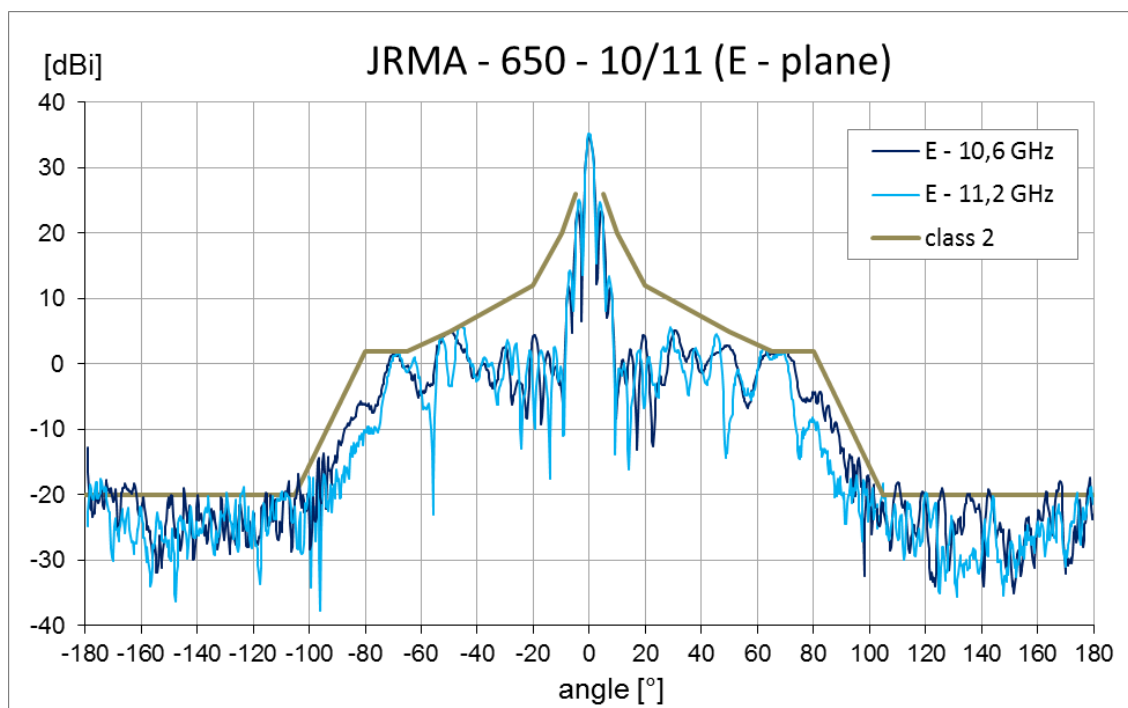
<b>Parabola</b>	ø 650 mm, Aluminium alloy
<b>Cover</b>	UV steady plastic ABS
<b>Input / output</b>	Circle waveguide 19 mm
<b>Installation for mast</b>	Ø 40 - 120 mm
<b>Operating wind load</b>	180 km/h
<b>Survival wind load</b>	240 km/h
<b>Weight of antenna</b>	9.7 kg (21.38 lbs.)
<b>of bracket</b>	3.5 kg (7.7 lbs.)
<b>Shipping dimensions</b>	790 mm x 790 mm x 515 mm
<b>Waveguide + fixing of the microwave unit</b>	Racom compatible

The antenna is supplied together with a bracket that allows easy mounting on a mast. Bracket can be installed separately on the mast. Subsequently, you can simply hang up the antenna with microwave unit into it. We recommend mounting on the mast with minimal Ø 50 mm in the areas with the

## Parabolic antenna JRMA - 650 -10/11Ra

occurrence of the adverse weather conditions. Bracket allows fine setting elevation (of gradient) and azimuth  $\pm 20^\circ$ . It is possible to mount to right and left side.

### Measurements of radiation pattern:



## Parabolic antenna JRMA - 650 -10/11Ra

### Outline:

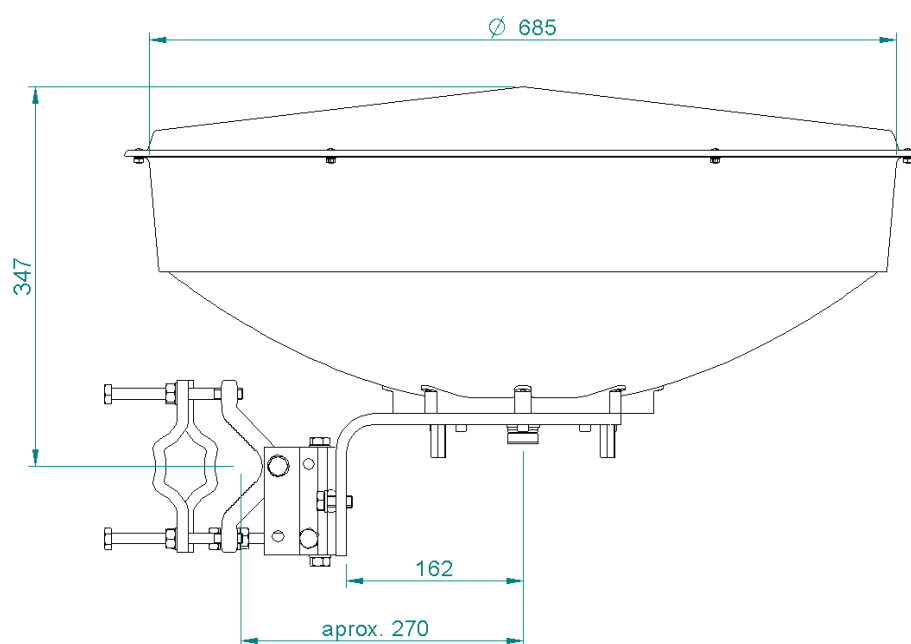
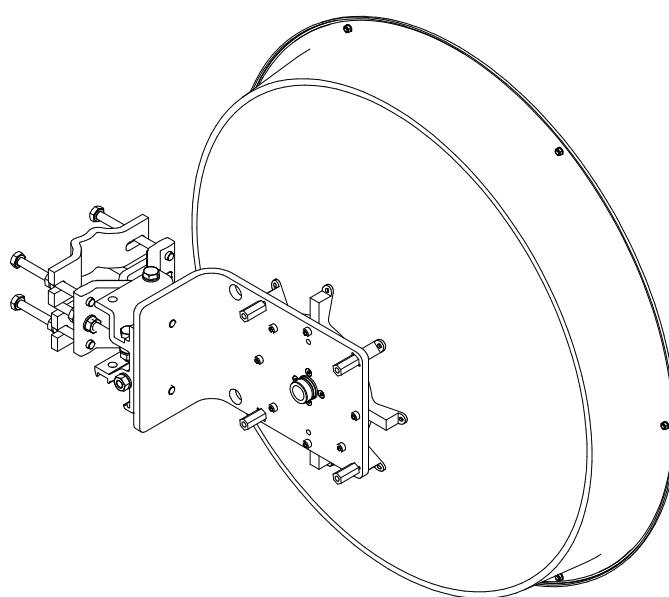


Fig. 1 Antenna dimensions



## Parabolic antenna JRMA - 650 -10/11Ra

---

Fig. 2 Antenna with massive holder (back side)